




HENNEPIN THEATRE TRUST

Disney
THE LION KING
THE WORLD'S #1 MUSICAL
SENSORY-FRIENDLY PERFORMANCE
SAT, APRIL 20 AT 2 PM  ORPHEUM THEATRE

©Disney

Social Narrative



This is the Orpheum Theatre, where I will see Disney's *The Lion King*.



We will arrive to the theater by car, public transportation, cab, or some other way, and then go in the main entrance. Before the show, there might be a long line of people waiting to enter. I can use a sensory tool that I brought with me if I need it while I wait.



I may have digital tickets on my phone, or at the Box Office. If I need to pick up my tickets at the theater, I can go to the Box Office window. They will ask to see an ID and find my tickets for me.



Once it's our turn, we will go through a security check. Security will look in everyone's bag and may use an electronic wand. The machines may beep. This keeps everyone safe at the theater.



After the security check, I will walk through the main lobby. There might be a lot of people in this area.



Once it's our turn, the usher will ask to see my ticket. They will use a scanning machine to check my ticket, and tell me the direction of my seat.



There are snack and beverage options in the building. I might have to wait in line to purchase a snack or beverage.



If I need assistance or have a question, I can find an usher or a person with a Helper t-shirt. There will be an usher at the theater door to help me find my seat.



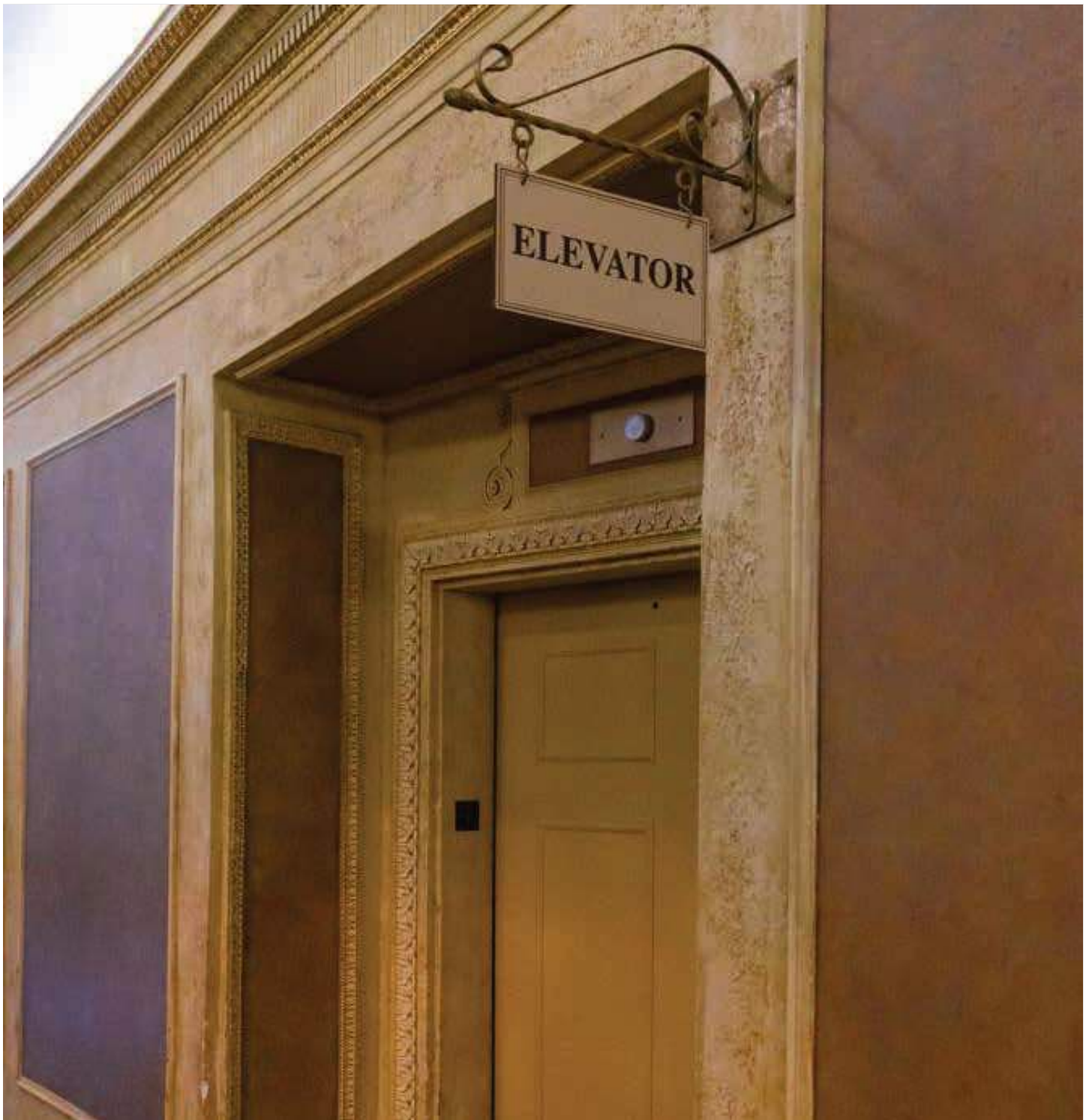
My ticket will have a letter and a number. I can match this with the number on my seat. When I find a match, this is my seat.



If I want to move around, there are various areas in the building I can go in order to be more comfortable. I can ask a Helper or go to the lobby to find a map.



If I get there after the show starts, I may have to wait for a few minutes before I can go into the theater. The show will be playing on a TV screen in the Main Floor and 1st Mezzanine lobby. I can also watch the show on the screen if I need a break from my seat.



If my seat is on a higher level, I can use the staircase or elevator to get to it. There will be an usher to help me on every floor.



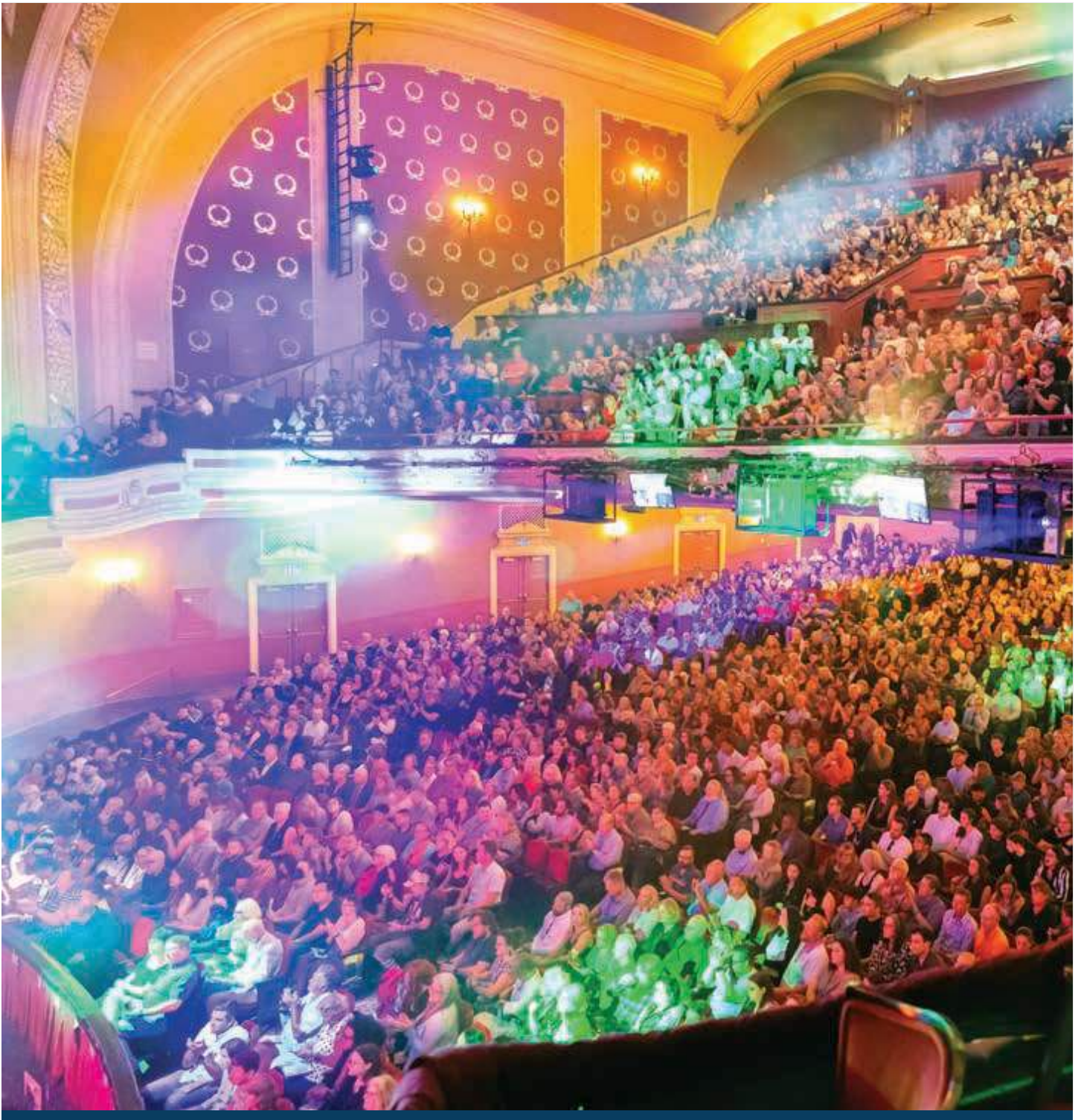
There will be tools available to help me feel comfortable. I can find them at the information table in the lobby, or in the quiet areas and activity areas.



A quiet area is available on the main floor, 2nd mezzanine, and the balcony. This space includes low lighting, sensory tools, and Helpers to make me feel more comfortable. I can go here any time I need a break.



An activity area is available on the 1st mezzanine. This space includes activities, craft supplies, and Helpers. This area may be louder than the lobby, as sound can echo in the space.

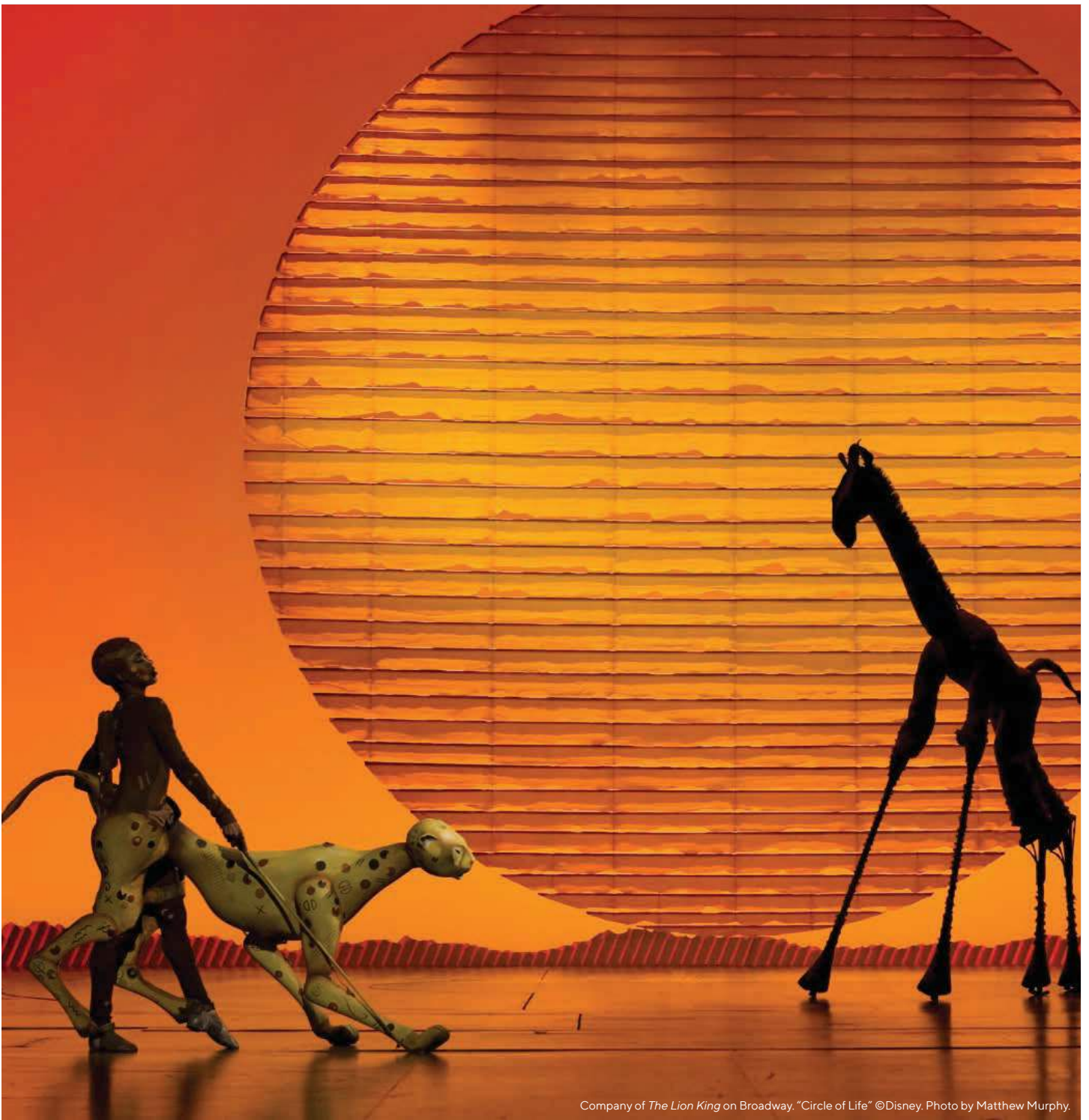


The lights will change when the show begins. I might hear the audience clapping.



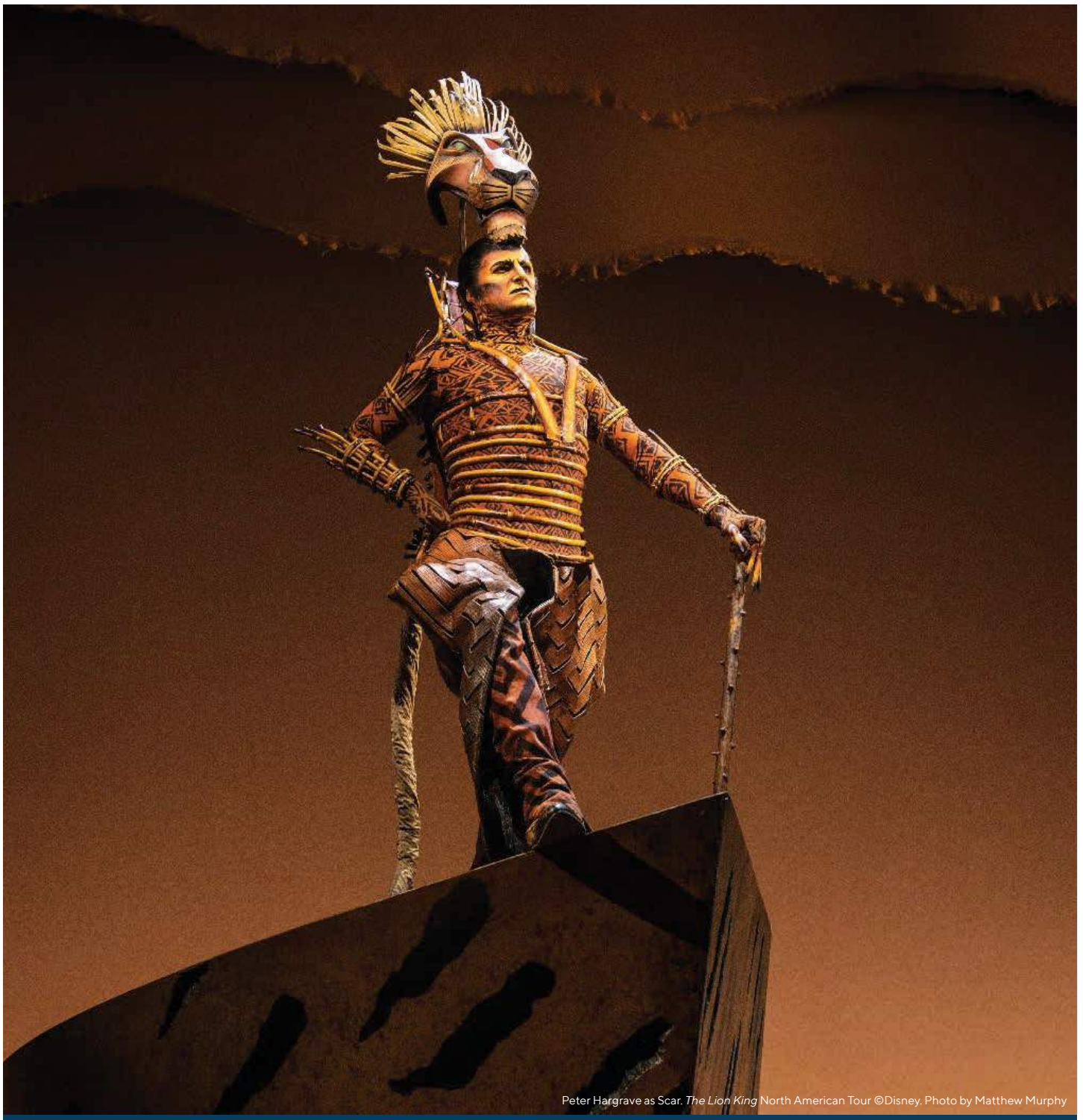
Company of *The Lion King* on Broadway. "Circle of Life" ©Disney. Photo by Matthew Murphy.

During the show, I will see actors wearing costumes, dancing, and singing on the stage and in the aisle. I will hear the orchestra playing music. I can respond to the show by laughing, clapping, or some other way.



Company of *The Lion King* on Broadway. "Circle of Life" ©Disney. Photo by Matthew Murphy.

There are many puppets in the show. Sometimes they are very large. The puppets are used by the actors, and are not real animals. The puppets will not touch me. If the puppets make me feel nervous, I can look away or take a break.

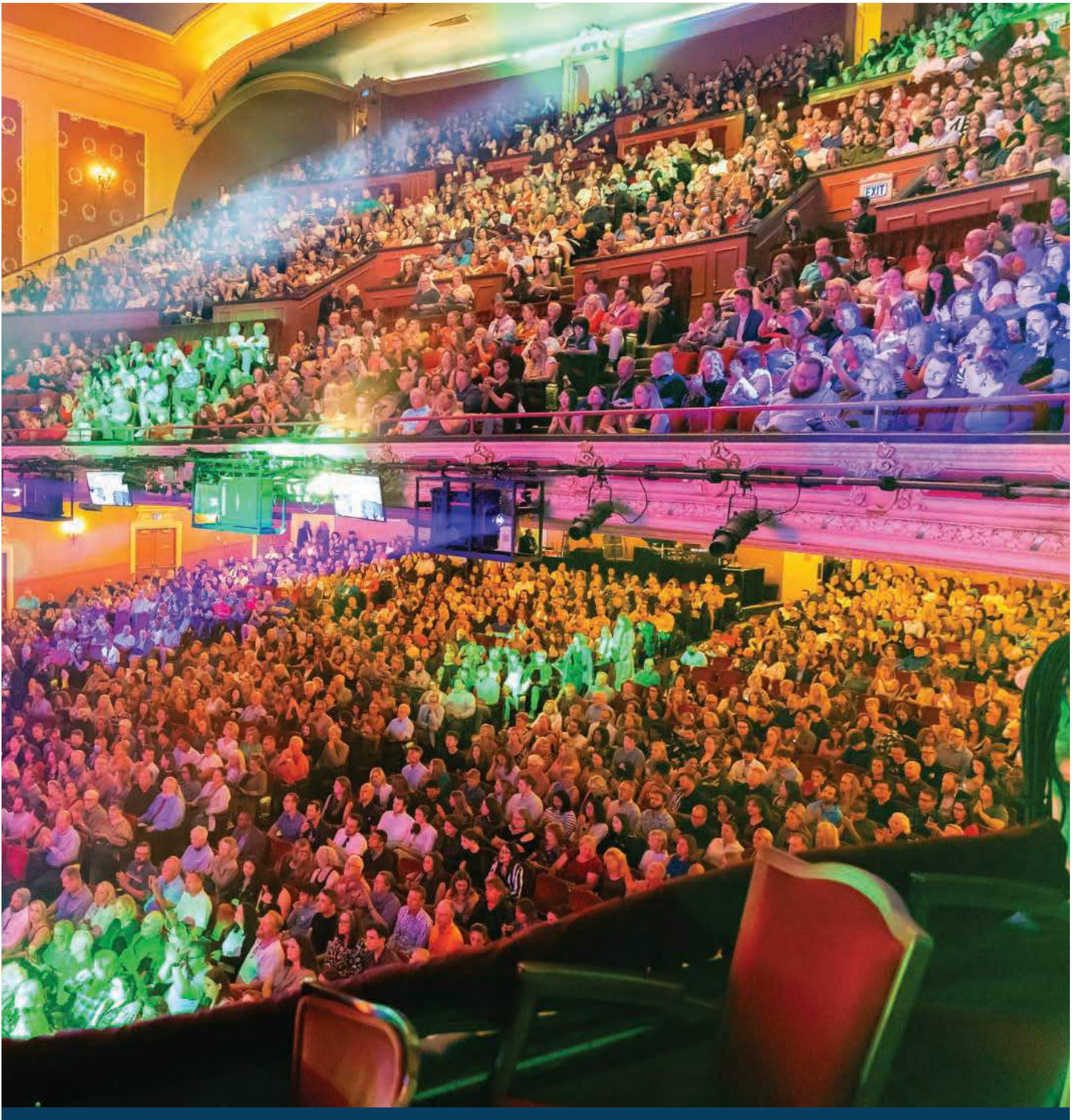


Peter Hargrave as Scar. *The Lion King* North American Tour ©Disney. Photo by Matthew Murphy

The show can sometimes be sad or have mean characters. I can ask a Helper or go to the information table for a guide to the emotional parts of the show.



In the middle of the show, there is a break where the show pauses for 15 minutes. I might wait in line to use the bathroom, go for a walk, or stay in my seat.



At the end of the show, people will clap and stand. The actors will take a bow. If it's too loud, I can use headphones, cover my ears, or exit the theater.



After the show, I will leave my seat. All the people will leave the Orpheum at the same time, and I will need to wait in line. The aisles will be crowded.



We had a great time at the Orpheum Theatre watching the Broadway touring production of Disney's *The Lion King*.

Acknowledgements



Fraser is a Minnesota nonprofit providing autism, mental health, and disability services across the lifespan. Fraser partners with businesses throughout the state to create more inclusive experiences for individuals with sensory differences through the Fraser Sensory Certified™ Supports and Training program. Visit www.fraser.org to learn more.



This activity is made possible by the voters of Minnesota through a grant from the Minnesota State Art Board, thanks to a legislative appropriation from the arts and cultural heritage fund.

About Hennepin Theatre Trust



Hennepin Theatre Trust drives cultural and economic vitality in Minnesota through leadership of the dynamic Hennepin Theatre District in downtown Minneapolis and educational programming that reaches every area of the state. Its historic theatres – Orpheum, State and Pantages – light up Hennepin Avenue with top-tier entertainment, including the best of Broadway. The beautifully renovated event center at 900 Hennepin expands the Trust’s capacity for diverse performances and events, and the organization’s transformation of the places and spaces outside the theatres create a vibrant, welcoming place for all. Annually, the Trust serves thousands of high school students statewide and brings hundreds of thousands of people to the Theatre District to experience art on the street and stage. Hennepin Theatre Trust is a nonprofit 501(c)(3) organization.

Additional Resources



Additional pre-visit resources are available online on our sensory-friendly page. Scan the QR code or visit HennepinTheatreTrust.org/SensoryFriendly